

# Brooke Singer

Superfund365: Artists and Data Visualization

# Why Artists?

# Why Artists?

- The language of art is representation

# Why Artists?

- The language of art is representation
- Artists have become actors in public sphere

# Why Artists?

- The language of art is representation
- Artists have become actors in public sphere
- Artists like to be where the action is

# SUPERFUND365

## A SITE-A-DAY



TUCSON INTERNATIONAL AIRPORT AREA, AZ; ANACONDA CO. SMELTER, MT; U.S. RADIUM CORP, NJ.

Superfund365 is a 2007 commission of New Radio & Performing Arts, Inc. for its Turbulence website. Additional funding provided New York Foundation for the Arts (NYFA).



Robert J. Martin  
Former National Ombudsman of the EPA (1992-2002)













Superfund Site  
Information  
Site Documents  
Data Element  
Dictionary (DED)  
Order Superfund  
Products

## Superfund Information Systems

[Recent Additions](#) | [Contact Us](#) | [Print Version](#)

Search:

[EPA Home](#) > [Superfund](#) > [Sites](#) > [Superfund Information Systems](#) > Search Superfund Site Information

### Superfund Site Information

#### Search Superfund Site Information

Site information for NPL sites (i.e., sites proposed to the NPL, currently on the final NPL or deleted from the final NPL) is displayed in a standardized site progress profile format. The profile includes information such as the current status of cleanup efforts, what cleanup milestones have been reached and how much liquid and solid-based media have been treated. Additionally, the profile includes links to information found on EPA Regional Web sites. All information is presented in easy to understand, non-technical language. **Only NPL sites are displayed in the site progress profile format, non-NPL and archived sites are displayed in a less graphical format.**

[View a list of all NPL sites.](#) [Search Tips](#)

A search of sites that have been archived from the inventory of active sites can be performed. At the top of the Search page, select the "Archived Sites" radio button.

The data on this page are updated on a monthly basis and were last updated on Friday, August 08, 2008.

\* Using the Ctrl key while clicking with the mouse, multiple options can be selected within these boxes.

Active vs.  
Archived: ☒ Search **Active Sites** ☐ Search **Archived Sites**  
[What are active and archived sites?](#)

Site Name:

EPA ID:

Street Address:

City:

County:

\*State:   
Alabama  
Alaska  
American Samoa

\*Region:   
Region 1 (CT, MA, ME, NH, RI, VT)  
Region 2 (NJ, NY, PR, VI)  
Region 3 (DC, DE, MD, PA, VA, WV)

ZIP Code:

HRS Score:

My objectives:

# My objectives:

- Make *more* public the CERCLIS database

# My objectives:

- Make *more* public the CERCLIS database
- Encourage browsing and exploration for general audience (please don't leave!)



# My objectives:

- Make *more* public the CERCLIS database
- Encourage browsing and exploration for general audience (please don't leave!)
- Facilitate understanding (bring in other info, make comparisons between sites etc)

# My objectives:

- Make *more* public the CERCLIS database
- Encourage browsing and exploration for general audience (please don't leave!)
- Facilitate understanding (bring in other info, make comparisons between sites etc)
- Make data expandable/commentable or more open and responsive



## QUANTA RESOURCES

### Chemical Plant

#### Address

ONE RIVER RD  
EDGEWATER NJ, 07020

#### Region

Latitude: 40.801437  
Longitude: -73.993699  
District: NJ 32



#### Hazardous Ranking Score

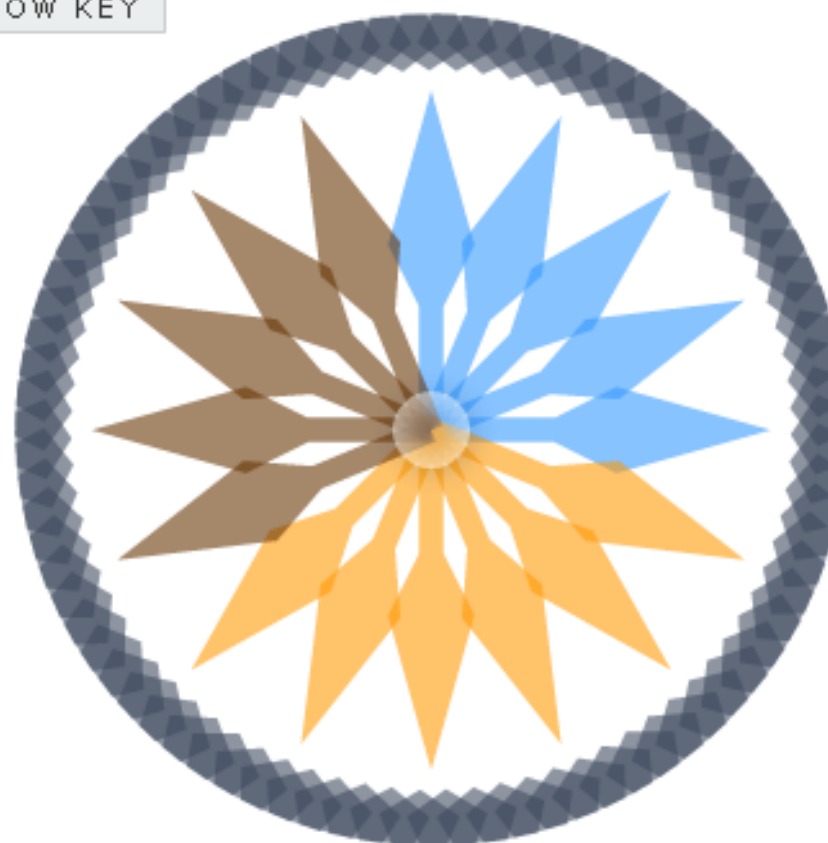
50.00 / 100

#### Cleanup Costs

Not Available

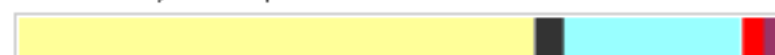
#### Description

The Quanta Resources Corporation (QRC) site is located at 163 River Road in Edgewater, Bergen County, New Jersey. The site covers approximately 8 acres since the expansion of River Road took over a portion of the site. The site property is bordered to the north by the Celotex Industrial Park, to the south by the former Spencer-Kellogg Industrial Park, to the west by River

[SHOW KEY](#)


#### Demographics

Ethnicity in Zip Code:



Pop within 10 miles: 5,080,588

Average Income: \$63,455.00 per year



Map of the site location

[CONTENT](#)

[MAPS \(PDF\)](#)

#### Timeline



A few words about  
building Superfund365



# SUPERFUND365

## A SITE-A-DAY



TUCSON INTERNATIONAL AIRPORT AREA, AZ; ANACONDA CO. SMELTER, MT; U.S. RADIUM CORP, N.J.

Superfund365 is a 2007 commission of New Radio & Performing Arts, Inc. for its Turbulence website. Additional funding provided New York Foundation for the Arts (NYFA).



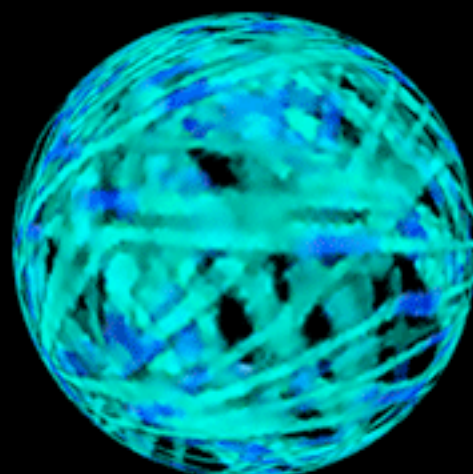
[Turbulence](#) is a project of **New Radio and Performing Arts, Inc.** (aka Ether-Ore) [click here](#)

- [About](#) • [Artists' Studios](#) • [Commissions](#) • [Events](#) • [Guest Curators](#) • [Networked Music Review](#)
- [Networked Performance](#) • [Spotlight](#) • [Subscribe](#) • [Upgrade! Boston](#) • [more >>](#) •

## Most Recent



*Michael  
Takeo  
Magruder*



**networked**  
a (networked\_book) about (networked\_art)



## We Need Your Support

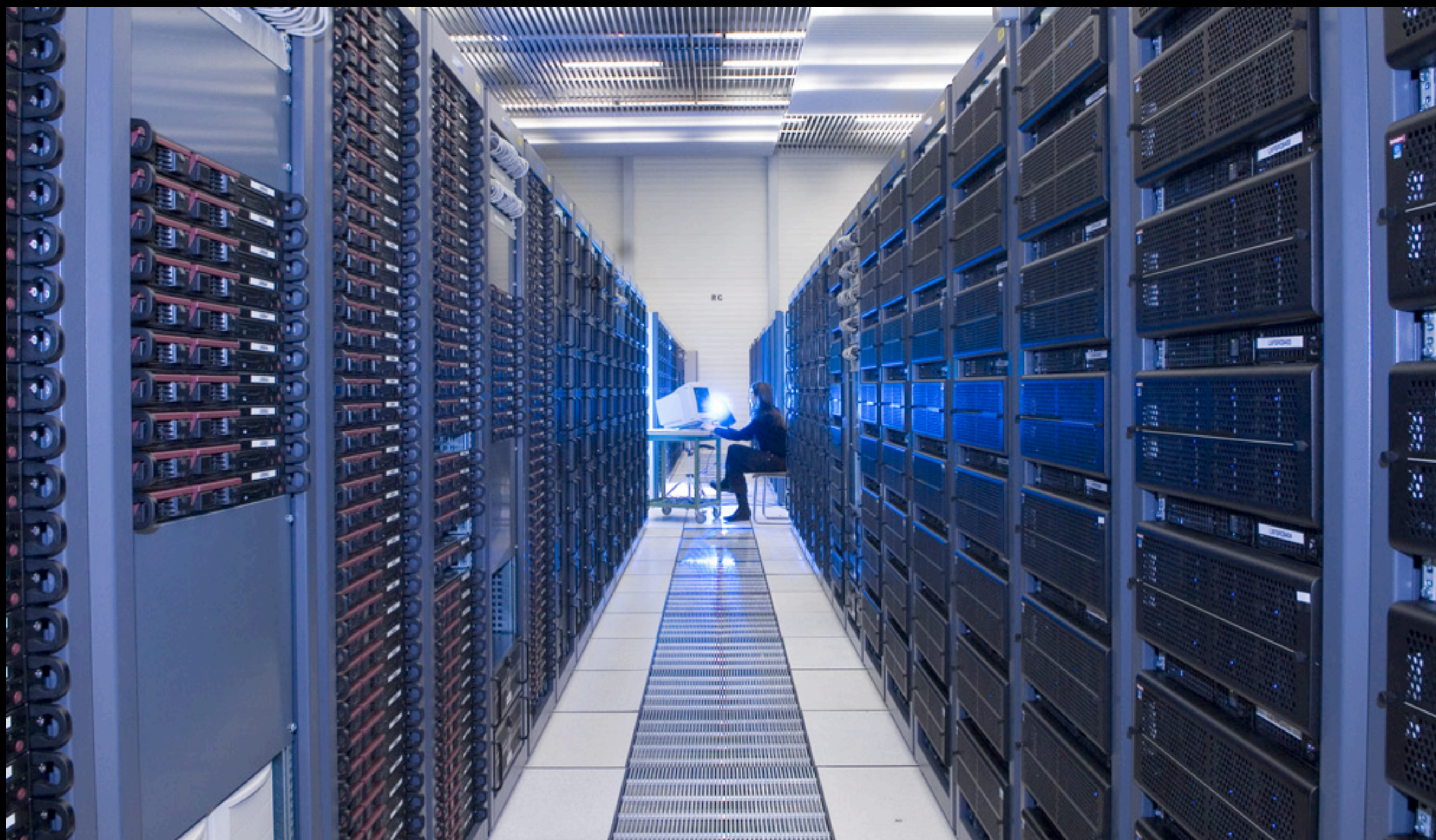


Or Mail Your Check To:

New Radio and Performing Arts, Inc.  
124 Bourne Street, Roslindale  
MA 02131

**(Tax-Deductible for US Residents)**









# Data Problems:

# Data Problems:

- CERCLIS offered CSV files (static)



# Data Problems:

- CERCLIS offered CSV files (static)
- Not comprehensive (pdfs, phone calls)

# Data Problems:

- CERCLIS offered CSV files (static)
- Not comprehensive (pdfs, phone calls)
- No contaminant data in CERCLIS!

# Data Problems:

- CERCLIS offered CSV files (static)
- Not comprehensive (pdfs, phone calls)
- No contaminant data in CERCLIS!
- Not consistent nomenclature

What Happened Once  
SF365 Launched...

## Discussion

Name:

Comment:

Post Comment

**EcoRover aka Pat Munday:** October 1, 2008

This is excellent and helpful information for those who study Superfund and for those who live with Superfund in their community. Thank you for the great work.

I live in (and study) the upper Clark Fork River basin on Montana--"America's largest Superfund site."

**Tobin B.:** September 20, 2008

Fantastic run. I really appreciate your drive and dedication. This site really affected my interpretations and understanding of superfund sites, their contents, impacts and solutions. Thank you for taking on this challenge for an entire year.

Cheers, TCB

**matt d:** August 30, 2008

Great work!! I have been tuned in regularly and have even worked on a few of the sites mentioned. I thought the Pearl Harbor description was a little weak. How does a sugar company become PRP for a naval base location?? Sounds like there is more to the story somewhere



## Images

17 / 21

SF365: Virgil moved to Stratford in May 2007. He found out a few months later that his town was a Superfund site when he went to Home Depot and tried to buy propane for the bar-b-que. He was told that the Home Depot in Stratford could not sell propane due to its Superfund designation.



+ CONTENT

## Discussion

Name:

Comment:

**Patty:** December 14, 2008

Has there been any reports of people getting sick? Anyone know where this information can be found if so?

**undefined:** December 14, 2008

We just turned down a beautiful house in Stratford, after the final offer was excepted because we had found out about this Superfund site. It is really unfortunate, Stratford is a lovely town, and it was a great house, just too close to the ballfield.

**Meredith Gabris:** October 9, 2007



## RAYMARK INDUSTRIES, INC.

### Manufacturing Plant

#### Address

75 EAST MAIN STREET  
STRATFORD CT, 06614

#### Region

Latitude: 41.200001  
Longitude: -73.110001  
District: CT 3/4



#### Hazardous Ranking Score

0.00 / 100

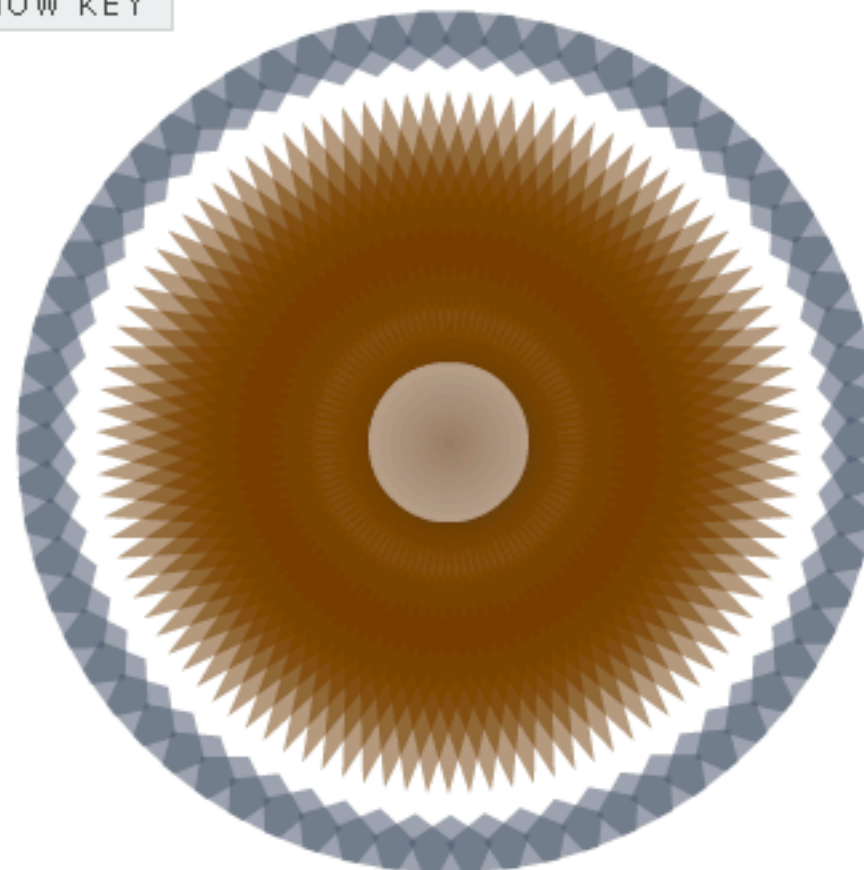
#### Cleanup Costs

Not Available

#### Description

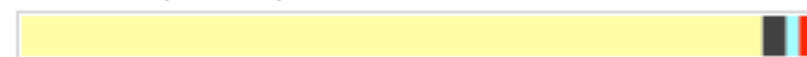
Raymark Industries, Inc. (Raymark) was a manufacturer of automotive brakes, clutch parts, and other friction components, primarily for the automotive industry. Raymark and its predecessors were located on a 34-acre parcel at 75 East Main Street in Stratford, CT. Raymark operated at this location from 1919 until 1989 when operations ceased. Raymark's

SHOW KEY



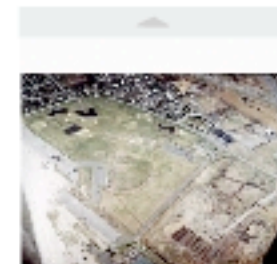
#### Demographics

Ethnicity in Zip Code:



Pop within 10 miles: 373,810

Average Income: \$57,489.00 per year



CONTENT

#### Timeline



#### Discussion







A photograph of a red rectangular sign with rounded corners and a white border, mounted on a silver chain-link fence. The sign features the words 'NO TRESPASSING' in large, bold, white capital letters. Below this, in smaller white capital letters, it reads 'PROPERTY OF EAST BRUNSWICK TOWNSHIP' and 'ORD. 165-1'. The fence is made of interlocking metal rings. In the background, there are green trees and a clear sky.

**NO  
TRESPASSING**

PROPERTY OF  
EAST BRUNSWICK  
TOWNSHIP  
ORD. 165-1





“We tend to think of oil spills as dramatic events — a sinking ship, a burning rig. So it’s easy to forget that across the country, hundreds of spills, many left over from a less regulated time, continue to poison groundwater and leak toxic fumes. Instead of letting the Gulf spill divert our attention yet again from slow-moving disasters like Newtown Creek, we should take it as an impetus to address problems much closer to home.”

Alex Prud’homme, May 15, 2010, New York Times



# Shortcomings:

# Shortcomings:

- Static (not feed off live data source)

# Shortcomings:

- Static (not feed off live data source)
- Closed & Proprietary

# Shortcomings:

- Static (not feed off live data source)
- Closed & Proprietary
- New interface necessary now SF365 is archive



[http://bsing.net/  
superfund\\_photo.html](http://bsing.net/superfund_photo.html)



brooke.singer@purchase.edu